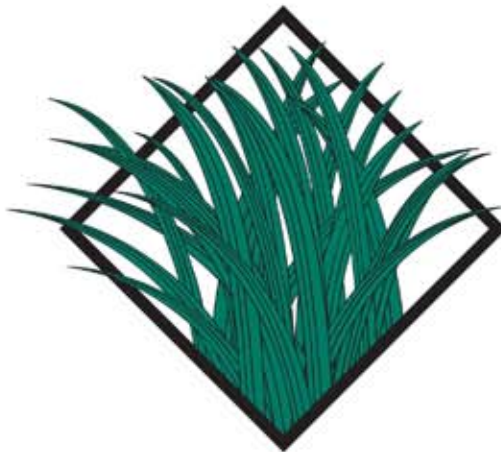




The science of turf made simple.

Products ♦ Recommendations ♦ Service

2011 Product Guide



PRO
TURF
SOLUTIONS
A division of OVS

**The ProTurf Solutions difference...
is what sets us apart.**

At ProTurf Solutions we've built our reputation by working closely with our clients to find cost efficient solutions to meet their needs.



Stone Creek Golf Course
Oregon City, Oregon



Gary Willis
503-703-8904 - cell
866-873-8076 - fax



Hillsboro Stadium
Hillsboro, Oregon

**ProTurf Solutions is
a business unit of OVS**

OVS Aurora
19658 Hwy 99E
Hubbard, OR 97032
971-216-0111 ph
971-216-0112 fax

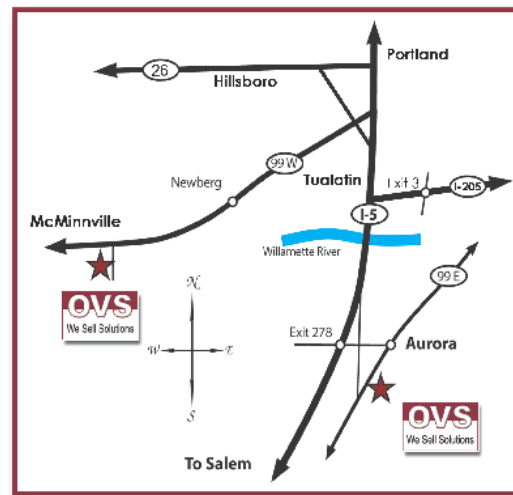


Adam Bertram
971-216-0111
adam@ovs.com

OVS McMinnville
2700 St. Joseph Rd.
McMinnville, OR 97128
503-435-2700 ph
503-474-0476 fax



Rick Jorgenson
503-435-2700
rickj@ovs.com



Additional copies of this Product Guide are available at www.ovs.com/turf/ProTurf_Guide_complete.pdf



Table of Contents

The ProTurf Solutions Difference.....	2
Table of Contents.....	3
Delivery Schedule.....	4
Our Distribution Partners.....	5
Popular Chemistries.....	6
Popular Chemistries (con't).....	7
Fertilizer.....	8
Fertilizer, Amendments, Mulches, Tackifiers.....	9
ProTurf Branded Fertilizers.....	10
Turf Maintenance Programs.....	11
Pacific Northwest Turf Maintenance Schedule.....	12
Sports Field Products.....	13
Redox.....	14
Soil Sample.....	15
Granular Concentrated Soluble Humic Acid.....	16
New Lawn Installation.....	17
Natural Knit® - Seed.....	18
Natural Knit® - Sod.....	19
Grass Seed.....	20
Disease and Fungicide Chart.....	21
Hand Tools & Personal Protection Equipment.....	22
Commercial Landscape Equipment, Parts & Service.....	23
Additional Resources.....	24

Delivery Schedule



All deliveries on regularly scheduled routes/days are free with a \$500 minimum order (or a \$25 fuel surcharge may be applied).

Orders must be placed by Noon, the day prior to delivery.

Trucks are loaded on a first come/first served basis with priority given to items that can be placed on a pallet. To ensure that there is room for your order, please remit your request as early as possible.

Established Delivery Routes

Targeting Oregon and Southern Washington

PDX Metro Vancouver Route - Beaverton/Hillsboro

Tuesdays and Fridays (from Aurora)

Southern Route - as far as Eugene/Springfield

Every Thursday (from Aurora or McMinnville)

NW Coastal Route - Longview WA, Astoria, Seaside

1st Wednesday of the Month (from Aurora)

Gorge Route - Hood River Area

2nd Wednesday of the Month (from Aurora)

West Route - Newberg, McMinnville, Forest Grove, Beaverton

4th Wednesday of the Month (from Aurora)

Southern Oregon Route - Roseburg/Umpqua Valley

Schedule varies. Please call for details.

Deliveries outside of established routes, and/or delivery area will incur appropriate freight charges via Common Carrier or UPS/FedEx. These charges will be added to the invoice.

Our Distribution Partners

A selection of ProTurf Solutions/OVS products available at our many authorized outlets:



JB Instant Lawn

14020 NE 124th S
Redmond, WA 98052
800-599-2699

Lane Forest Products

2111 Prairie Rd.
Eugene, OR 97402
541-345-9085

Lane Forest Products

820 N 42nd Street
Springfield, OR 97478
541-744-1277



Landscape Products & Supply

1748 NE 25th Ave.
Hillsboro, OR, 97124
503-846-0881

OVS Aurora

19658 Hwy 99E
Hubbard, OR 97032
971-216-0111

OVS McMinnville

2700 St. Joseph Rd.
McMinnville, OR 97128
503-435-2700



S & H Landscape Supplies

20200 SW Stafford Rd,
Tualatin, OR, 97062
503-638-1011

Swanson Bark & Wood Products

240 Tennant Way,
Longview WA, 98632
360-414-9663

West Wind Landscape Supplies

3111 Highway 101 N
Seaside, OR 97138
503-717-0489

Popular Chemistries

MSDS's are available upon request or at www.cdms.net

Herbicides <i>Pre-emergent</i>	Category/Notes	Form	Brand Name Equivalent	Size(s)	Active Ingredient
Casoron 4G	Pre & Post-emergent	Granular	N/A	25 & 50 LB	Dichlobenil
Dimension .13% + 10-6-4	Pre & Post-emergent Herbicide + Fertilizer	Granular	N/A	40 LB	Dithiopyr
Dimension 270G (.27%)	Pre-emergent Herbicide	Granular	N/A	50 LB	Dithiopyr
Dimension .25%	Pre-emergent Herbicide	Granular	N/A	50 LB	Dithiopyr
Dimension 2EW	Pre-emergent Herbicide	Liquid	N/A	.5 & 2.5 GA	Dithiopyr
Monobor Chlorate	Pre-emergent Herbicide	Pellet	N/A	50 LB	Sodium Metaborate Tetraydate
Oryzalin 4 Pro	Pre-emergent Herbicide	Liquid	Surflan	2.5 GA	Oryzalin
Oxadiazon 2G	Pre-emergent Herbicide	Granular	Ronstar	50 LB	Oxadiazon
Pendulum Aqua Cap	Pre-emergent Herbicide	Liquid	N/A	1 & 2.5 GA	Pendimethalin
Snapshot 2.5G	Pre-emergent Herbicide	Granular	N/A	50 LB	Trifluralin
Herbicides <i>Post-emergent</i>	Category/Notes	Form	Brand Name Equivalent	Size(s)	Active Ingredient
Aquamaster	Aquatic Herbicide	Liquid	N/A	2.5 GA	Glyphosate
Crossbow	Post-emergent Herbicide	Liquid	N/A	QT, 1 & 2.5 GA	Triclopyr + 2-4D Ester
Crossroads	Post-emergent Herbicide	Liquid	Crossbow	1 & 2.5 GA	Triclopyr + 2-4D Ester
Cutrine Plus	Aquatic Herbicide	Liquid	N/A	1 GA	Chelated Copper
Glyphosate (Generic)	Post-emergent Herbicide (Brand name varies)	Liquid	Roundup	2.5 GA	Glyphosate
Glyphosate w/ Surfactant (Generic)	Post-emergent Herbicide (Brand name varies)	Liquid	Roundup Pro	2.5 GA	Glyphosate
Mec Amine 2-4D	Post-emergent Herbicide	Liquid	N/A	2.5 GA	2-4D, MCPP & Dicamba
Oxyfluorfen 2E	Post-emergent Herbicide	Liquid	Goal 2XL	2.5 GA	Oxyfluorfen
Prodiamine 65 WDG	Post-emergent Herbicide	WDG	Barricade	5 LB	Prodiamine
Quik-Fire	Organic Post-Emergent Herbicide	Liquid	N/A	2.5 GA	Ammoniated Soap of Fatty Acids
Rangestar 2-4D	Post-emergent Herbicide	Liquid	Weedmaster	2.5 GA	Dicamba/2-4D
Roundup Pro	Post-emergent Herbicide	Liquid	N/A	2.5 GA	Glyphosate w/ Surfactant
Scythe	Post-emergent Herbicide	Liquid	N/A	2.5 GA	Pelargonic Acid
Speedzone	Post-emergent Herbicide	Liquid	N/A	1 & 2.5 GA	Carfentrazone-ethyl
Tahoe 3A	Post-emergent Herbicide	Liquid	Garlon 3A	2.5 GA	Triclopyr
Trimec Classic	Post-emergent Herbicide	Liquid	N/A	1 & 2.5 GA	Dimethylamine Salt
Trimec Plus	Post-emergent Herbicide	Liquid	N/A	1 & 2.5 GA	Dimethylamine Salt

Please note:

- Sample representation only...please inquire if you do not see the product you are looking for.
- These are only recommendations. Always consult product label for specific rates based on disease diagnosis and follow directions.
- Contact us regarding product registration for your state.



Popular Chemistries

MSDS's are available upon request or at www.cdms.net

Insecticides/Miticides/ Etc.	Category/Notes	Form	Brand Name Equivalent	Size(s)	Active Ingredient
Abamectin 0.15 EC	Miticide	EC Liquid	Avid	QT & GA	Abamectin
Acephate	Termiticide	Sprayable	Orthene 90 S	5 LB	Acephate
Bifenthrin 0.2G	Insecticide	Granular	Talstar	50 LB	Bifenthrin
Bifenthrin I/T 7.9F	Insecticide	Flowable Liquid	N/A	GA	Bifenthrin
CSI Cyonara EW	Insecticide	Flowable Liquid	Tempo Ultra	QT.	Lambda-Cyhalothrin
CSI Permethrin SFR	Termiticide	EC Liquid	Astro	1.25 GA	Permethrin
Imidacloprid 0.5G	Insecticide	Granular	Merit	50 LB	Imidacloprid
MERIT 0.5G	Insecticide	Granular	N/A	30 LB	Imidacloprid
Omni Supreme Oil	Insecticide/Miticide	Liquid	N/A	2.5 GA	Petroleum Oils
Sevin 7G	Insecticide	Granular	N/A	10 & 30 LB	Carbaryl
Sevin SL	Insecticide	Liquid	N/A	2.5 GA	Carbaryl
Sluggo	Molluscicide	Granular	N/A	2.5 JUG & 50 LB	Iron Phosphate
Talpirid Mole Bait	Rodenticide	Synthetic Worms	N/A	20 PK	Bromethalin
Waspfreeze	Insecticide	Aerosol	N/A	12 OZ	D-trans Allethrin, Phenothrin
Fungicides	Category/Notes	Form	Brand Name Equivalent	Size(s)	Active Ingredient
Chlorothalonil DF	Fungicide	Dry Flowable	Daconil Ultrex	5 & 10 LB	Chlorathalonil
Chlorpyrifos 4E	Fungicide	EC liquid	Dursban	2.5 GA	Chlorpyrifos
Daconil 5G	Fungicide	Granular	N/A	20 LB	Chlorathalonil
Fluid Fungicide	Fungicide	EC Liquid	Chipco GT	.5 GA	Iprodione/Thiophanate-Methyl
Ipro 2 SE	Fungicide	Liquid	Chipco 26019	2.5 GA	Iprodione
Mefenoxam 2AQ	Fungicide	EC Liquid	Subdue Maxx	1 & 2.5 GA	Mefenoxam
Pentathalon LF	Fungicide	Liquid	Dithane	2.5 GA	Mancozeb
Propiconazole 14.3	Fungicide	EC Liquid	Banner Maxx	1 & 2.5 GA	Propiconazole
TM 4.5 Flowable	Fungicide	Liquid	Cleary's 3336L	2.5 GA	Thiophanate-methyl
Adjuvants	Category/Notes	Form	Brand Name Equivalent	Size(s)	Active Ingredient
Fighter F-10	Adjuvant-Anti-foam	Liquid	N/A	PT & GA	Dimethylpolysiloxane
Foam Line	Adjuvant-Foam Marker	Liquid	N/A	2.5 GA	Anionic Sufactants & Butanol
Herbimax®	Adjuvant-Premium crop oil concentrate	Liquid	N/A	2.5, 30, & 275 GA	Petroleum Hydrocarbons
LI - 700	Adjuvant-Surfactant	Liquid	N/A	1, 2.5 GA	Methylacetic Acid
Phase®	Adjuvant-Spreader/Sticker	Liquid	N/A	2.5 GA	Methylated Esters
Spreader 90	Adjuvant-Non-Ionic Surfactant	Liquid	N/A	1, 2.5, 30 & 275 GA	Dihydroxydiethyl

Please note:

- Sample representation only...please inquire if you do not see the product you are looking for.
- These are only recommendations. Always consult product label for specific rates based on disease diagnosis and follow directions.
- Contact us regarding product registration for your state.



Fertilizer

Greens Grade Fertilizers	Bag Size	SGN	Rate-LBS/M	LBS N/M	Product Description & Comments
18-3-18 65% MU w/minors package	50 LB	100	5.6	1.0	Greens Grade Methylene Urea + Minors
23-0-22 72% Meth-x 40	50 LB	100	4.3	1.0	Greens Grade Methylene Urea + Minors
Mini Grade Fertilizers	Bag Size	SGN	Rate-LBS/M	LBS N/M	Product Description & Comments
19-0-19 69% MU w/minors package	50 LB	145	4.3	1.0	High quality, 2 particle blend of MESA
25-0-15 41% CRN 100% EXPO	50 LB	145	4.0	1.0	Premium, mid-sized fertilizer
Soluble Fertilizers	Bag Size	SGN	Rate-LBS/M	LBS N/M	Product Description & Comments
13.5-0-44	50 LB	WS	Varies	Varies	Potassium Nitrate
15-0-15 9.1% Ca	25 LB	WS	Varies	Varies	Phosphate free with 9.1% Calcium
20-20-20 All Purpose w/minors package	25 LB	WS	Varies	Varies	Warm weather feeding of turf & ornamentals
20-9-20	25 LB	WS	Varies	Varies	General purpose
21-0-0 Ammonium Sulfate	17 LB	WS	Varies	Varies	Ammonium Sulfate
46-0-0 Urea	50 LB	WS	Varies	Varies	Mini-prill, highly soluble
Redox - Soluble Fertilizers	Bag Size	SGN	Rate-LBS/M	LBS N/M	Product Description & Comments
diKaP (0-31-52 Organic & amino acids)	20 LB	WS	Varies	Varies	Facilitates phenolic compound production
H-85 (85% Carbon active complex)	20 LB	WS	Varies	Varies	Chelating and complexing material
Mainstay CA (20% plant available Calcium)	2.5 GA	WS	Varies	Varies	Enhanced calcium nutrition via assimilation
Oxycom HT (0-4-3 + 20% stabilized Oxygen)	1 GA	WS	Varies	Varies	Reduces abiotic and biotic stress in plants
PeneCal (22% Surfactant 10% Calcium)	2.5 GA	WS	Varies	Varies	Improves water penetration
Rootex (7-47-6 Plus 8% L-amino acids)	20 LB	WS	Varies	Varies	Root stimulant & starter fertilizer
Rx 780 (10-8-10 Plus 50% L-amino acids)	20 LB	WS	Varies	Varies	Increases plant metabolism & Fert. uptake
Rx Gold (4.5-25-14 Combination Product)	20 LB	WS	Varies	Varies	Overseeding, grow-in, & root zone
Rx Supreme (3-14-15 Combination Product)	20 LB	WS	Varies	Varies	Reduces stress & improves metabolism
TriPlex Iron (18%Fe, 2% humic & 3% L-amino)	20 LB	WS	Varies	Varies	Exclusive - Triple Chelation Technology
Triplex Mg (12% Mg, 2% humic & 3% L-amino)	20 LB	WS	Varies	Varies	Exclusive - Triple Chelation Technology
TriPlex Micro (6%Fe 6%Mn 6%Zn 6%B 2%Cu)	20 LB	WS	Varies	Varies	Exclusive - Triple Chelation Technology
ProTurf Starter/Ornamental Fertilizers	Bag Size	SGN	Rate-LBS/M	LBS N/M	Product Description & Comments
9-9-9 Iron Pro 11% S 11% Fe plus Humic Acid	50 LB	240	11.0	1.0	Good for acid loving plants (rhodies/azaelas)
14-14-14 Plus Landscape Pro plus Humic Acid	50 LB	240	7.1	1.0	Excellent general purpose 3-4 month plant food plus Humic Acid
15-10-10 Pacific NW Rose Food Plus	50 LB	240	6.6	1.0	Balanced rose food with Humic Acid
16-4-16 EcoStarter	40 LB	240	6.7	1.0	Economic and ecological alternative
16-16-16 ProStart	50 LB	240	6.2	1.0	Balanced to promote new establishment
16-16-16 Pro Start 50% Slow + minors package	50 LB	240	6.2	1.0	Even ratio: slow release + trace

Please note:

- Sample representation only...please inquire if you do not see the product you are looking for.
- These are only recommendations. Always consult product label for specific rates based on disease diagnosis and follow directions.
- Some fertilizers may contain organic & synthetic components and may not be considered organically certifiable.

Fertilizer, Amendments, Mulches & Tackifiers

ProTurf Custom Blends	Bag Size	SGN	Rate-LBS/M	LBS N/M	Product Description & Comments
10-0-0 16 Fe - Pro Iron Color/Moss control	50 LB	240	10	1.0	Moss control and green up - single app.
Supreme Pro 16-4-8 w/2% Fe	50 LB	240	6.2	1.0	Quality quick release fertilizer w/Iron
Eco Pro 21-7-14 40% Slow - PSCU	50 LB	240	4.7	1.0	Well-balanced economical blend
Pro Gold 22-2-10 Plus 60% Slow 5% Fe + minors package	50 LB	240	4.5	1.0	Methylene Urea, minors plus Humic Acid
Nitra Pro 22-3-10 Cool Season 8%	50 LB	240	4.5	1.0	Ammonium Nitrate for quick response
22-2-12 All Season Plus 60% Slow 5% Fe + minors package	50 LB	240	4.5	1.0	Year-round formulation with broad-spectrum minor nutrient package with Humic Acid
Standard Grade Fertilizer	Bag Size	SGN	Rate-LBS/M	LBS N/M	Product Description & Comments
19-0-19 62% Mesa 3% Fe - Lebanon	50 LB	195	5.2	1.0	62% Meth-X with Ammonium Sulfate
20-0-10 40% Mesa 1% Fe - Lebanon	50 LB	200	5.0	1.0	62% Meth-X with Ammonium Sulfate
21-0-0 Ammonium Sulfate	50 LB	210	4.7	1.0	Straight Ammonium Sulfate
46-0-0 Urea	50 LB	210	2.1	1.0	Straight Urea
Combination Products	Bag Size	SGN	Rate-LBS/M	LBS N/M	Product Description & Comments
0-0-15 with Confront 3 Weed & Feed	40 LB	150	3.5 - 4	N/A	Post-emergent weed control w/potash
19-0-6 Mesa with Confront 3 Weed & Feed	50 LB	150	3.5 - 4	Var	Excellent slow release weed control
22-4-10 w/ Turf Growth Reg. - Poa Control	40 LB	150	3.5 - 4.5	Var	Poa annua control fertilizer
Organic* Fertilizers	Bag Size	SGN	Rate-LBS/M	LBS N/M	Product Description & Comments
Phyta-Grow Salinas Veggie Mix 8-4-4	50 LB	Coarse	12.5	1.0	Meat & bone meal w/Potassium Sulfate
Phyta-Grow 13-6-2 Ichaboe Plus	50 LB	Coarse	6.5	1.0	+2% Ca-derived from seabird guano & feather meal and molasses
ProGanic Plus 14-2-8*	40 LB	Medium	7.1	1.0	A synthetic & organic hybrid fertilizer featuring chicken manure, biosolids, and Humic Acid.*
Amendments	Bag Size	SGN	Rate-LBS/M	LBS N/M	Product Description & Comments
Pro-Pell-It Lime	50 LB	Reg	25-50	N/A	Excellent source of Calcium, sweetens soil
Pro-Pell-It Dolomite	50 LB	Reg/Mini	25-50	N/A	Excellent source of Calcium & Magnesium
Pro-Pell-It Gypsum	50 LB	Reg	25-50	N/A	Excellent source of Calcium & Sulfur
Ferrous Sulfate 31%	50 LB	Mini-prill	4.0	N/A	Quick green-up
Ferrous Sulfate 20% WSP	50 LB	Powder	4.0	N/A	Quick green-up
Zinc Sulfate	50 LB	Powder	4.0	N/A	Quick green-up
Mulches/Tackifiers	Bag Size	SGN	Rate-LBS/M	LBS N/M	Product Description & Comments
Peat Moss	3.8 cu ft	N/A	7.6 cu ft	N/A	Soil amendment used for topdressing
Turf Mulch	30 LB	N/A	60	N/A	Heat-treated grass straw. Green/Topdressing
Ecofiber	50 LB	N/A	50	N/A	Hydroseeding mulch. 100% wood fiber
Ecofiber Plus with Tackifier	50 LB	N/A	50	N/A	Hydroseeding mulch. 100% wood fiber + Tackifier

Please note:

- Sample representation only...please inquire if you do not see the product you are looking for.
- These are only recommendations. Always consult product label for specific rates based on disease diagnosis and follow directions.
- * Some fertilizers may contain organic & synthetic components and may not be considered organically certifiable

ProTurf Branded Fertilizers

<u>Formulation</u>	<u>Benefits</u>	<u>Rate-LBS/ M</u>	<u>When to use</u>
Iron Pro Plus 9-9-9+Fe	All purpose fertilizer for acid loving plants (Azaleas, "Rhodies" etc.) with 11% Iron, 13% Sulfur, and Humic Acid.	11.0	Spring & Fall
Pro Iron 10-0-0-16	Quality all-season green. Economical form of Nitrogen, Sulfur and 16% Ferrous Sulfate.	10.0 (0.6 LBS N/M)	Year-round
ProGanic Plus* 14-2-8	Hybrid fertilizer containing both synthetic and organic components, PCSU, plus Humic Acid. 53% slow-release turf fertilizer. 40LB bag.	7.1	Spring/Summer/Fall
Landscape Pro Plus 14-14-14	Premium, balanced formulation, 55% extended slow release (4-5 months) landscape fertilizer. Non "rust-colored" staining Iron Oxide and a complete minor nutrient package. Release of Nitrogen is controlled through the soil microbial action with Humic Acid.	7.1	Spring/Summer/Fall
Supreme Pro 16-4-8+Fe	Balanced nutrient analysis formula at a ratio of 4:1:2 containing Ammonium Sulfate for quick response.	6.2	Spring/Summer/Fall
EcoStarter 16-4-16	Economical starter fertilizer containing both synthetic and organic components. 16% slow-release, 40LB bag.	6.2	Spring/Summer/Fall
ProStart 16-16-16	Uniform 1:1:1 ratio, quick release "starter" fertilizer designed for new seed applications and general ornamental use. Non "rust-colored" staining Iron Oxide. Good year-round, all-purpose, minor nutrient package.	6.2	Spring/Summer/Fall
ProStart 50 16-16-16	Uniform 1:1:1 ratio, 50% slow release "starter" fertilizer designed for new seed applications and general ornamental use. Non "rust-colored" staining Iron Oxide. Good year-round, all-purpose, nutrient.	6.2	Spring/Summer/Fall
Eco Pro 21-7-14	Economical, 40% slow release fertilizer featuring a 3:1:2 ratio.	4.7	Spring/Summer/Fall
Pro Gold Plus 22-2-10	Premium 56% slow-release turf fertilizer containing Methylene Urea & Poly-Coated Sulfur Ureas, allowing for quick green-up with minimal growth. 5% Fe Added - Non "rust-colored" staining Iron Oxide and a complete minor nutrient package with Humic Acid.	4.5	Spring/Summer/Fall
All Season Plus 22-2-12	Premium, high Potassium (promotes hardiness & tolerance to drought & cold), 60% slow-release turf fertilizer, for uniform nutrient disbursement. Includes 5% Fe - non "rust-colored" staining Iron Oxide and a complete minor nutrient package with Humic Acid.	4.5	May be used year-round. High Potassium ideal for "pre-winter" applications
Nitra Pro 22-3-10	Cool season turf fertilizer with immediately available Nitrate Nitrogen (8%) provides maximum green-up. Use for cool season growth or a quick "boost" if lawns look chlorotic.	4.5	Fall/Winter

Please note:

- Sample representation only...please inquire if you do not see the product you are looking for.
- These are only recommendations. Always consult product label for specific rates based on disease diagnosis and follow directions.
- Fertilizers may contain nutrients that will stain surfaces. Please use caution when applying. Application rate based on 1lb N/M except where noted, actual needs may vary. All fertilizers come in 50 LB bags unless marked otherwise
- Some fertilizers may contain organic & synthetic components and may not be considered organically certifiable.

ProTurf Maintenance Programs

Premium Quality Turf Maintenance Program—Pacific Northwest

****programs may change due to climatic changes****

<u>Date*</u>	<u>Product**</u>	<u>Program/Solution</u>	<u>Rate-LBS/M</u>	<u>LBS of N/M</u>
Feb 15th	Nitra Pro 22-3-10	Routine Fertilization	4.5	1.0
Feb 15th	Ferrous Sulfate**	Added green up and "Moss Control"	4.0	N/A
Mar 15th	Lime	pH Maintenance	25 LB	N/A
May 15th	Pro Gold 22-2-10 Plus Humic Acid	Routine Fertilization	4.5	1.0
May 15th	Speedzone Herbicide	Seasonal Weed control	1.1 to 1.8 OZ	N/A
July 15th	Pro Gold 22-2-10 Plus Humic Acid	Routine Fertilization	4.5	1.0
Sept 15th	Pro Gold 22-2-10 Plus Humic Acid	Routine Fertilization	4.5	1.0
Sept 15th	Speedzone Herbicide	Seasonal Weed Control	1.1 to 1.8 OZ	N/A
Nov 15th	All Season 22-2-12 Plus Humic Acid	Routine Fertilization	4.5	1.0
Nov 15th	Lime	pH Maintenance	25 LB	N/A
Nov 15th	Ferrous Sulfate	Added green up and "Moss Control"	4.0	N/A

Low Maintenance Turf Fertilizer Program

<u>Date*</u>	<u>Product**</u>	<u>Program/Solution</u>	<u>Rate-LBS/M</u>	<u>LBS of N/M</u>
Mar 15th	Time to Lime!	pH Maintenance	50 LB	N/A
Mar 15th	All Season 22-2-12 Plus Humic Acid	Routine Fertilization	4.5	1.0
Apr 15th	All Season 22-2-12 Plus Humic Acid	Routine Fertilization	4.5	1.0
May 15th	19-0-6 W/Lockup	Fertilization/Weed Control	4.0	1.0
July 15th	Pro Gold Plus 22-2-10	Routine Fertilization	4.5	1.0
Sept 15th	19-0-6 W/Lockup	Fertilization/Weed Control	4.5	1.0
Nov 15th	All Season 22-2-12 Plus Humic Acid	Routine Fertilization	4.5	1.0

Please note:

- Sample representation only...please inquire if you do not see the product you are looking for.
- These are only recommendations. Always consult product label for specific rates based on disease diagnosis and follow directions. except where noted, actual needs may vary. All fertilizers come in 50 LB bags unless marked otherwise
- * Timing is approximate and depends on climate and soil conditions
- ** Fertilizers may contain nutrients that will stain surfaces. Please use caution when applying. Application rate based on 1lb N/M.



Pacific NW Turf Maintenance Schedule

	<u>Jan.</u>	<u>Feb.</u>	<u>March</u>	<u>April</u>	<u>May</u>	<u>June</u>	<u>July</u>	<u>Aug.</u>	<u>Sept.</u>	<u>Oct.</u>	<u>Nov.</u>	<u>Dec.</u>
<u>Seeding</u> Choose One				Pacific Northwest New Lawn Seeding Pacific Crest Sun Mix Rate: 10-12 LBS/M Pacific Crest Sun/Shade Mix Rate: 8-10 LBS/M Pacific Crest Shade Rate: 6-8 LBS/M Spring Over Seeding Pacific Crest Sun Blend @ 10-12 LBS/M Sun/Shade Mix @ 8-10 LBS/M Shade Mix @ 6-8 LBS/M Summer Over Seeding Easy to accomplish - Needs adequate watering and Mulch Turf Mulch 30 lbs per 500 SF Fall Over Seeding Pacific Crest Sun Blend @ 10-12 LBS/M Sun/Shade Mix @ 8-10 LBS/M Shade Mix @ 6-8 LBS/M Pacific Crest Sun Mix will often germinate into mid or late October depending on soil temperature.								
<u>Watering</u>				Natural Knit® @ 3 - 4 LBS/M Ideally, start applying PeneCal in April/May to avoid dry spots altogether. During dry months add water 1"/week. Best applied in early morning. Dry spots in summer need PeneCal surfactant to improve water penetration.								
<u>Mowing</u>				General Rule #1: Keep turf height at 2 1/2" year around General Rule #2: Don't remove more than 1/3 of the leaf blade at one time. Acceptable mowing height: 1" - 2 1/2"								
<u>Fertilizer</u> Choose One			10-0-0 Iron Pro (16% Fe) 16-4-8 Supreme Pro 22-3-10 Nitra Pro 22-2-12 All Season Plus Humic Acid	19-0-19 or 20-0-10 Lebanon W/Mesa 22-2-12 All Season Plus Humic Acid 22-2-10 Pro Gold Plus Humic Acid	10-0-0 Iron Pro (16% Fe) 16-4-8 Supreme Pro 22-3-10 Nitra Pro 22-2-12 All Season Plus Humic Acid Methylene Ureas in combination with Humic Acids provide the most cost efficient solutions!							
<u>Lime</u>			Lime is an important soil amendment for managing pH. The addition of lime depends on the existing pH of the soil. The general recommendation for applying lime is 25LBS/M 2 times/year. Early Spring and early Fall are the best times for application. Soil tests may be necessary to determine the appropriate amount of lime needed to adjust the pH.									
<u>Weed Control</u> Choose One			Pre-emergents: Dimension Pendulum Aqueap Surflan	19-0-6 w/ Confront 3 Trimec Classic Liquid Speed Zone	Pre-emergents: Dimension Pendulum Aquacap Surflan	19-0-6 w/ Confront 3 Trimec Classic Liquid Speed Zone						Insecticide Treatment Carbaryl kills Crane fly larvae. <i>Application ideal w/ rain</i>
<u>Insects</u>			Crane fly mature by late spring and fly away. It is best to treat Crane fly in the larvae stage. Carbaryl can still be applied to minimize insect or grub damage in spring, summer, or fall. Best to aerify when lawn is dry in late spring, summer or fall. Consider Pro's Choice Red after aerification to improve the soil percolation process. Once a year is sufficient for most lawns. Cores can be raked up and/or mowed up.									
<u>Aerify/ Coring</u>			Good time to lay sod in the winter if ground is not frozen. Maintain sufficient water if laying sod during the hot summer months.									
<u>Sod</u>			Okay to lay sod in the winter if ground is not frozen.									

Please note:

- These are only recommendations. Always consult product label for specific rates based on disease diagnosis and follow directions.
- Contact us regarding product registration for your state.
- Fertilizers may contain nutrients that will stain surfaces.

Sports Field Products



Reduce Compaction ♦ Minimal Dust ♦ Improved Drainage ♦ Safer Fields

*Pro's Choice® improves the native soil root zone
by adding permanent pore space to prevent compaction*

When to use: New construction, renovation, and top-dressing after aerification. Top-dressing rates after aerification: 250 to 500 LBS/M Renovation or construction rates: 15% to 30% by volume. 1 – 2 tons/M, or the equivalent of 4 inches deep.



RED INFIELD CONDITIONER

Designed to meet the challenges of wet, dry or compacted infields, this unique durable granule helps create passageways for drainage and eliminate compaction for truer bounces and safer play.



SELECT PREMIUM INFIELD CONDITIONER

This premium infield conditioner keeps infields smooth, safe and resilient. Its uniformly sized granules and deep red color makes the perfect infield top dressing for professional looking infields.



PROMOUND PACKING CLAY

A unique blue gumbo packing clay, Pro Mound bonds to form a solid subsurface in the mound and batters' boxes that allows players to "dig in" and establish footing without leaving large holes.



GREEN PREMIUM SOIL CONDITIONER

Colored to blend in with your turf, the granules can even camouflage bare or worn areas. Pro's Choice Green soil conditioner is made of the same highly-absorbent montmorillonite clay as our regular Pro's Choice Select making it perfect for topdressing and gameday touchups.

Additional information: www.oildri.com/proschoice

Also...Sports line Field Marking Chalk (White) - 50 LB, 48 bags / pallet

We do offer delivery and the use of nurse-boxes for improved efficiency of application...please ask!





**PRO
TURF**
SOLUTIONS
A division of OVS

The science of turf made simple.

Redox

Redox is a market leader in plant and soil nutrition, producing a wide range of specialty fertilizer for Turf, Agriculture, and the Ornamental markets. Redox employs advanced production systems that combine chemistry and biotechnology, providing balance and consistently delivering results.



The Agronomic Focus



SOIL CHEMISTRY

- Plant nutrient exchange
- Nutrient tie-up
- Nutrient leaching
- Soil biology
- Base saturation
- Solution chemistry
- Soluble carbon
- Cation:anion ratios
- Soil structure

WATER & SALINITY MANAGEMENT

- Capillary:Non-capillary pore space
- Root zone volumetric moisture
- Water:Air exchange rates
- Percolation rates
- Salinity reduction

PLANT NUTRITION

- Nutrient assimilation
- Physiological timing
- Root health
- Ion balance



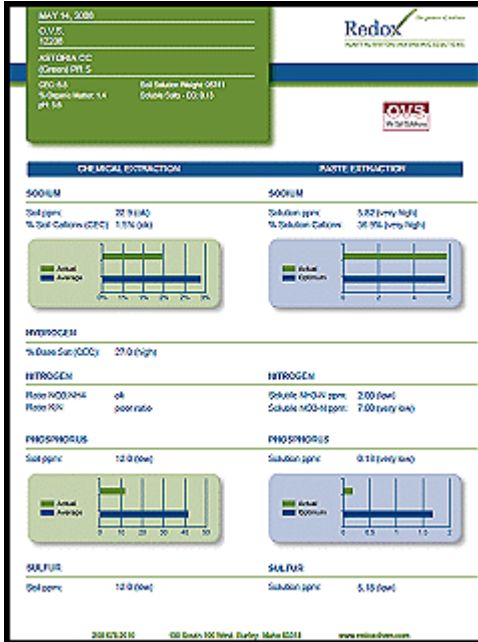
Custom Programs... Delivering you Cost Efficient Solutions

Each client has unique requirements due to water, soil conditions and nutritional needs that are crop specific and address climatic variations. For this reason, Redox has developed a unique technical service system that derives the custom fertilization recommendations from analysis of the soil, the plant, and careful follow-up throughout the season.

We achieve our consistent results through practical application and analysis on a wide variety of conditions.

Soil Sample

A soil sample should give you the complete picture!



- ◆ Identify what is in the soil (chemical parameters)
- ◆ Identify what is available to the plant (soluble parameters)
- ◆ Identify the cation ratios, as per Ca, Mg, K, Na, and H
- ◆ Identify the soil EC, CEC, pH, Organic Matter and soil solution weight
- ◆ Identify the macro and micronutrients in the soil
- ◆ Identify the ratio of cations to anions

This New Exclusive Test covers 42 points, measuring your nutrient parameters.

Terms to know:

CEC – Determines the ability of the soil to hold nutrients

Organic Matter (OM) – Is the measurable amount of Carbon Dioxide released from the soil in the presence of acid.

Humus – Is the more active portion of the soil OM

pH – Is the negative log of the H⁺ ion concentration, a low pH means the soil has excess H⁺ ions, and a high pH means the soil has excess OH⁻.

Soil Solution Weight – Is defined as the weight of the water in the soil at field capacity (FC).

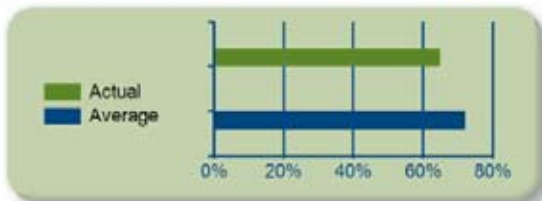
Contact Gary Willis for additional information regarding soil tests.
503-703-8904
gary@ovs.com

The **Exchangeable extraction** is run by the addition of acidic reagents to the soil to identify nutrients in the soil. This test only identifies what is in the soil and MAY be available, not what is available.

The **Soluble Paste extraction** is run by the addition of distilled water to the soil to identify nutrients in the soil. This test only shows what is soluble in the soil and what can be available to the plant.

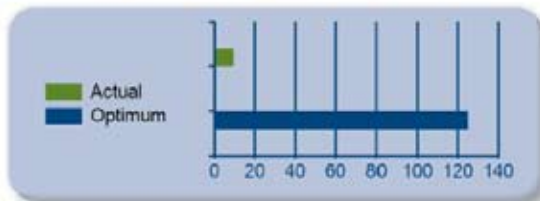
CALCIUM

Soil ppm: 1085.0 (moderately low)
% Soil Cations (CEC): 65.0% (moderately low)



CALCIUM

Solution ppm: 9.68 (very low)
% Solution Cations: 41.1% (low)



Why is this important?

A decision based on a traditional soil test (blue graph on left) only "sees" what is actually present in the soil, not what is soluble (ie. readily available, green graph on right). By utilizing this technology we are able to dramatically refine the inputs to achieve maximum effectiveness and improve efficiencies. As your nutritional cost inputs continue to increase, you'll be happy to have this new tool to manage your resources.



Granular Concentrated Soluble Humic Acid

HumiSmart™ is a fractionated, soluble product that is highly concentrated and easy to use in a granular form. ProTurf Solutions-OVS is the national distributor for HumiSmart™.

- Derived from Cretaceous Period fresh water humic substances



HumiSmart™
Humic Acid Concentrate

The high tech revolutionary processing and LOW HEAT CAPACITY DRYING concept provides a natural, easy to use humic and fulvic concentrate with a high bio-stimulation effect. HumiSmart™ is sourced from ancient fresh water humus deposits that have been protected by a layer of sandstone and have not been weatherized.

HumiSmart™ is an inexpensive soil activator that increases cellular activities at all levels, increases availability of nutrients, converts raw organic matter faster and detoxifies plant cells. In the root system, HumiSmart™ reduces the uptake of sodium, aluminum and other metals that negatively effect plants. This is a major boost to irrigated soils with high levels of salts.

HumiSmart™ will also buffer the soil with organic biopolymers, thus preventing tie up of phosphorus and trace elements (caused primarily by chemical salts reacting in an inorganic form). HumiSmart™ is a soluble product that comes in dry powdered or granulated form for easy shipping and long-term storage (unlike liquid humates that degrade over time).

Applications:

- *Soil Systems*
- *Irrigation/Injectors*
- *Hydroponics*
- *Hand Watering*
- *Seed Treatment*
- *Foliar Sprays*
- *Clones/Cuttings*
- *Compost Tea Activation*
- *More...*

Add HumiSmart™ to your favorite fertilizer/mulch blend... then enjoy the benefits!!

Available in 2 LB / 50 LB / & 2,000 LB bags

DIRECTIONS FOR USE

Rates below are for total applications over an entire growing season.
Multiple small applications are superior to one large application.

RATE:

TURF: 7-15 LBS per acre/YR

ORCHARDS: 10-20 LBS per acre/YR

VINEYARDS/BERRIES: 5-15 LBS per acre/YR

VEGETABLES: 7-20 LBS per acre/YR

SOIL OR COMPOST: 1/2 LB per yard of material

BROADCAST FOR BEDS: 2.5-5.5 OZ/M

INJECTORS & DOSERS: 1/2-1 LB/GA of water twice a week

New Lawn Installation

Timing - in the Pacific Northwest

March 15 thru October 15.

This varies each year depending upon the weather.

Seedbed Preparation

Step 1: Prepare seedbed by rototilling existing soil 3"- 4" deep.

Step 2: Add a 3" layer of a blended soil mix.

Step 3: Spread a fast-acting lime at an initial rate of 25 to 50 LBS/M

Step 4: Rototill the light and heavy layers of soil together to form a medium weight soil.

Step 5: Rake the tilled soil flat keeping the grade consistent with the yard.

Step 6: Roll the area with a water roller. Surface should be smooth and free from high/low spots and rocks.

Step 7: Irrigate, wait 2 weeks, and spray emerging weeds with a glyphosate product (Round-up or equivalent generic). For maximum effectiveness, repeat (failure to do this step will mean a higher percentage of weeds in your new lawn).



Seeding

Depending upon sunlight conditions, choose a seed mix that best fits your particular circumstances.

Pacific Crest Sun* - Rate: 10-12 LBS/M - For areas with no more than 50% shade/average/day.

Pacific Crest Sun/Shade - Rate: 8-10 LBS/M - For areas with no more than 60% shade/average/day.

Pacific Crest Shade - Rate: 6-8 LBS/M - For areas with no more than 70% shade/average/day.

*Substitute **Natural Knit Spreading Ryegrass** here if desired - Rate: 3-4 LBS/M



Fertilizing

Starter - Apply a starter fertilizer directly over the seed: ProStart 16-16-16 Rate: 3 - 6.25 LBS/M. Starter fertilizers generally last for 4 - 5 weeks.

Recommended Maintenance - A premium slow (minimum 50%) release fertilizer should then be applied which will last 8 - 10 weeks after application. Suggested products include: **ProGold 22-2-10 Plus Humic Acid** or **All-Season 22-2-12 Plus Humic Acid**. Rate: 4.5-6.9 LBS/M.



Mulching

Mulch/Peat Moss-should be applied directly over the seed bed and fertilizer. Applying mulch will generally lead to improved yield, bringing a higher percentage rate of germination.

Turf Mulch - Rate: 30 LBS / 500SF or **Peat moss** - Rate: 3.8 cu ft /500SF

Watering

Depending upon the rainfall and temperatures, water frequently enough to keep the seed moist throughout the day. If the seed dries out during germination it will die...keep it moist! After three weeks, reduce watering to normal requirement to meet climatic conditions.

Please note:

- Sample representation only...please inquire if you do not see the product you are looking for.
- These are only recommendations. Always consult product label for specific rates based on disease diagnosis and follow directions, except where noted, actual needs may vary. All fertilizers come in 50 LB bags unless marked otherwise
- * Timing is approximate and depends on climate and soil conditions
- ** Fertilizers may contain nutrients that will stain surfaces. Please use caution when applying. Application rate based on 1lb N/M.



Natural Knit® - Seed



Introducing our “Spreading” Perennial Ryegrass blend... “**Natural Knit®**”
ProTurf Solutions-OVS is the national distributor for **Natural Knit®** seed.



Seed rate: Over seeding – 2- 3 LBS per M - New seeding - 3-5 LBS per M
Available in 10, 25 and 50 LB bags

Developed for widespread adaptation and low mowing tolerance.

Characteristics	Spreading by pseudo-stolons (after vernalization) to form a very dense, highly attractive, durable turf with tightly intertwined horizontal tillers.
Overall Turf Aspect	Excellent, rated in the top 10 % of all perennial ryegrasses tested in Aurora, Oregon.
Texture	Similar to regular perennial ryegrasses (2 to 3 mm), later becoming very fine (1.0 to 1.5 mm) with a very high tiller count.
Color	Dark green
Mowing	Short cuts (½” - 2”) March through May produce the most beautiful and tightest sod.
Fertilization	About 4 to 5 LBS of N. An emphasis on fall and late fall applications is beneficial.
Thatch Development	None.

Why would you choose to use Seed versus Sod?

Pros:

- Most economical method
- Allows for total control of the process
- Under some conditions, may require very little prep-work

Cons:

- Slow: Germination time is dependent on many factors including time of year, rainfall, and temperature
- Ground is most vulnerable to weed and undesirable grass encroachment

Seeds?

United States Patent # US 7,696,418 B2

The science of turf made simple.



**PRO
TURF**
SOLUTIONS
A division of OVS

Natural Knit® - Sod



ProTurf Solutions-OVS is proud to strategically partner with **JB Instant Lawn**, grower of spreading perennial ryegrass sod.

Contact us to locate the ProTurf Solutions outlet nearest you!



Developed for widespread adaptation and low mowing tolerance.

Characteristics

Overall Turf Aspect

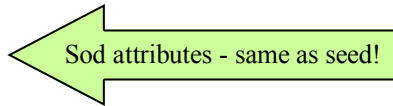
Texture

Color

Mowing

Fertilization

Thatch Development



Why would you choose to use Sod versus Seed?

Pros:

- Instant gratification
- New lawn in a day!

Cons:

- Living crop requires proper transplanting technique
- Requires significant prep-work to ensure success

Sod?



Grass Seed

Golf Courses

	Size(s)	Rate-LBS/M	Product Description
Greens			
Redan - Creeping Bentgrass	25 LB	1 to 1.5	Premium bentgrass blend; Independence & LS-44 creeping varieties
Penn A-4, Creeping Bentgrass	25 LB	1 to 1.5	Premium bentgrass blend
Fairways & Tees, Roughs			
Natural Knit® Spreading Perennial Ryegrass	10/25/50 LB	3 to 5	Golf quality, 3 way blend - self repairing
Pacific Crest Sun Blend - Blue Tag Certified	50 LB	8 to 12	Golf quality, 3 way blend of top rated NTEP perennial rye varieties
Pacific Crest Sun - Allegiance Treated	50 LB	8 to 12	Golf quality, 3 way blend of top rated perennial rye varieties, fungicide impregnated
Pacific Crest Sun/Shade	3/10 25/50 LB	5 to 7	Perennial rye, chewings and hard fescue
Pacific Crest Shade Mix	3/10/25 LB	3 to 6	Chewings, hard, sheep, and creeping fine fescues
Natural Knit® - Turf Type Tall Fescue Blend	50 LB	6 to 10	Excellent wear and drought tolerance
Early Spring Mix	50 LB	5 to 10	Perennial and Intermediate rye to speed up germination in cold temperatures
Poa Trivialis	50 LB	2 to 6	Excellent solution for extremely wet and shady turf issues



Commercial & Residential Sites, Cities, Parks, Schools

General Turf Areas			
Natural Knit® Spreading Perennial Ryegrass	10/25/50 LB	3 to 5	Golf quality , 3 way blend—self repairing
Pacific Crest Sun Blend - Blue Tag Certified	50 LB	8 to 13	Golf quality, 3 way blend of top rated NTEP perennial rye varieties.
Pacific Crest Sun/Shade	50 LB	5 to 7	Perennial rye, chewings and hard fescue
Pacific Crest Shade Mix	50 LB	3 to 6	Chewings, hard, sheep, and creeping fine fescues
Early Spring Mix	50 LB	5 to 10	Perennial and intermediate rye to speed up germination in cold temperatures

Sports Turf Applications			
Perennial Rye - Pacific Crest Sun - Blue Tag Certified	50 LB	8 to 13	Golf quality, 3 way blend of top rated NTEP perennial rye varieties
Kentucky Bluegrass - Champagne Kentucky Bluegrass	50 LB	2 to 5	Ranked #1 NTEP in WA. Excellent recuperative power with rhizome development
Tall Fescue - Natural Knit - Turf Type Tall Fescue Blend	50 LB	10 to 12	Excellent wear and drought tolerance
Natural Knit® Spreading Perennial Ryegrass	10/25/50 LB	3 to 5	Golf quality, 3 way blend - self repairing



Low Maintenance Solutions			
Economy Contractors Mix - low maintenance	50 LB	4 to 5	Economical turf cover with quick germination - good for erosion control
Natural Knit® - Turf Type Tall Fescue Blend	50 LB	5 to 8	Excellent wear and drought tolerance

Specialty			
Annual Rye	50 LB	3 to 5	Temporary cover crop/erosion control - quick establishment solution
Bio Swale	5/25 LB	2 to 3	Riparian Zone - transition area between continuously wet to drier upland zone
Economy Contractors Mix - low maintenance	50 LB	4 to 5	Economical turf cover with quick germination - good for erosion control
Maximum Poa Trivialis	50 LB	2 to 6	Excellent solution for extremely wet and shady areas

Forage Mixes			
Horse Pasture Mix	25/50 LB	25-50 acre	Forage mixture designed specifically for horses - endophyte free



Disease & Fungicide Chart

Fungicide rotation is a must to control disease resistance, but are you rotating chemical families as well?
This chart provides some helpful information about fungicides and their respective families.

Fungicide Solutions			Information Source: www.growingtrendsgolf.com Contact: gary@ovs.com Gary Willis (503)703-8904	Size	Systemic	Contact	Algae	Anthracnose	Brown Patch	Copper Spot	Damping Off	Dollar Spot	Fusarium	Leaf Spot	Melting Out	Moss	Necrotic Ring Spot	Pink Snow Mold	Powdery Mildew	Pythium Blight	Red Thread	Rust	Summer Patch
Brand name ~ Active Ingredient	Other options	Chemical Family																					
Sprayable																							
Quali Pro 720 ~ Chlorothalonil	Daconil Weather Stik	Chloronitrile	2.5 GA		■			■	■	■		■		■	■						■	■	
Propiconazole 14.3 QP	Banner Maxx	Sterol Inhibitor	1/2.5 GA	■				■	■			■	■	■	■			■	■		■	■	■
TM 4.5 Quali-Pro ~ Thiophanate-methyl	Cleary's 3336 + Chipco 26 GT	Benzimidazoles+ Dicarboximides	2.5 GA	■				■	■	■		■	■	■	■			■	■		■		■
Ipro 2SE - Quali-Pro Iprodione	Chipco 26GT Flo	Ethylenebis- dithiocarbamates	2.5 GA		■			■	■			■	■	■				■	■		■		■
T.M.4.5 Flowable - QP ~ Thiophanate-methyl	Cleary's 3336 or Olypic 6672 L	Benzimidazoles	2.5 GA	■				■	■				■					■			■		■
Mefenoxam 2 AQ	Subdue Maxx	Propionic acid/ methyl ester	1/2.5 GA	■							■										■		
Heritage	Heritage	Azoxystrobin	1 LB	■	■			■	■				■	■	■				■	■	■	■	■
PARFlow PCNB	Turfcide	Aromatic	2.5 GA	■					■	■		■							■				
Pentathlon LF ~ Mancozeb	Dithane	Dithiocarbamates	2.5 GA		■	■		■	■			■	■	■					■	■	■	■	
Granular																							
Eagle .62% G Mancozeb	Dithane	Dithiocarbamates	25 LB		■	■		■	■			■	■	■					■	■	■	■	
Daconil 5 G	Quali-Pro 720	Chloronitrile	20 LB		■			■	■	■		■		■	■						■	■	
Bayleton 1G	Triadimfon	Sterol Inhibitor	15 LB	■				■	■	■		■	■	■					■	■		■	■
PCNB G 10%	Turfcide	Aromatic	50 LB	■					■	■		■							■				
Fungicides & Fertilizer																							
14-2-14 w/PCNB 12.5%	Turfcide	Aromatic	50 LB	■					■	■		■							■				

Please note: - These are only recommendations. Always consult product label for specific rates based on disease diagnosis and follow directions.
- Contact us regarding product registration for your state.






Hand Tools & Personal Protection Equipment

<u>Brand</u>	<u>Model</u>	<u>Description</u>
		<ul style="list-style-type: none"> • Full Face filtering respirators • Half Face filtering respirators • Organic vapor filter • Particulate filter for dust • Pre-filter packs
		<ul style="list-style-type: none"> • Handheld pruners • Loppers • Replacement parts • Holsters
		<ul style="list-style-type: none"> • Handheld pruners • Hedge shears • Replacement parts • Holsters
		<ul style="list-style-type: none"> • Solid shank irrigation shovel • Scoop shovel • Fiberglass leaf rakes • 4-tine manure hook • D handle spade
		<ul style="list-style-type: none"> • Handheld seed spreader • 50# commercial grade broadcast spreader
		<ul style="list-style-type: none"> • Rain Jackets w/hood • Trousers & bib overalls • Lightweight and heavyweight available
		<ul style="list-style-type: none"> • Disposable • Hooded • Small - 5XL sizes available • Case discount

Commercial Landscape Equipment

Our Equipment Sales Department offers top quality brands of walk-behind, riding lawnmowers and compact tractors from leading manufacturers *with attractive financing options!*

<u>Brand</u>	<u>Model</u>	<u>Description</u>
		Full lineup of products including: <ul style="list-style-type: none"> • Trimmers • Pole pruners • Handheld and backpack blowers • Lawn edgers • Shredders • Chainsaws • Cultivators and more!
		<ul style="list-style-type: none"> • Twin Blade Advantage Quadracut HRS & HRR models • Mulching/partially mulching capable HRX models
		<ul style="list-style-type: none"> • Hydro Drive Walk-Behinds • Gear Drive Walk-Behinds • Zero-Turn Riding Lawnmowers • Commercial 21 Self-Propelled
		<ul style="list-style-type: none"> • T-Series Residential Mowers • GR-Series Residential Mowers • Z200-Series Commercial Mowers • Z300-Series Commercial Mowers • F-Series Commercial Mowers • BX60-Series Sub-Compact Tractors

OVS Parts & Service Departments

- Factory recommended preventative maintenance for large and small tractors
- Lawn & Garden / Small Engines
- Commercial Landscaping Equipment Repairs
- Mobile Service Capabilities
- Hauling Services
- Fleet Services



Additional Resources

Fluid Ounces = Volume Measurement

Dry Ounces = Weight Measurement

Liquid Measurements (approximate):

1 TSP		1/3 TBSP	5 ML
1 TSP	1/2 fluid ounce	3 TSP	15 ML, 15CC
2 TBSP	1 fluid ounce	1/8 cup, 6 TSP	30 ML, 30CC
1/4 cup	2 fluid ounces	4 TBSP	59 ML
1/3 cup	2 2/3 fluid ounce	5 tbs + 1 TSP	79 ML
1/2 cup	4 fluid ounces	8 TBSP	118 ML
2/3 cup	5 1/3 fluid ounces	10 TBSP + 2 TSP	158 ML
3/4 cup	6 fluid ounces	12 TBSP	177 ML
7/8 cup	7 fluid ounces	14 TBSP	207 ML
1 cup	8 fluid ounces/ 1/2 pint	16 TBSP	237 ML
2 cups	16 fluid ounces/ 1 pint	32 TBSP	473 ML
4 cups	32 fluid ounces	1 quart	946 MI
1 pint	16 fluid ounces/1 pint	32 TBSP	473 ML
2 pints	32 fluid ounces	1 quart	946 ml, 0.946 liters
8 pints	1 gallon/128 fluid ounces		3785 ml, 3.78 liters
4 quarts	1 gallon/128 fluid ounces		3785 ml. 3.78 liters
1 liter	1.057 quarts		1000 ML
1 gallon	128 fluid ounces		3785 ml, 3.78

Dry Measurements:

1 OZ		28 grams
2 OZ		57 grams
3 OZ		85 grams
4 OZ	1/4 LB	113 grams
8 OZ	1/2 LB	227 grams
12 OZ	3/4 LB	340 grams
16 OZ	1 LB	454 grams
32 OZ	2 LBS	907grams
1 kilogram	2.2 LB/35.2 OZ	1000 grams

Nutrient Availability in Relation to Soil pH

LIMESTONE MAKES FERTILIZER WORK. FERTILIZER EFFICIENCY GOES UP AS SOIL ACIDS GO DOWN

SOIL ACIDITY	NITROGEN	PHOSPHATE	POTASH	FERTILIZER WASTED
Extremely Acid 4.5 pH	30%	23%	33%	71.34%
Very Strong Acid 5.0 pH	53%	34%	52%	53.67%
Strongly Acid 5.5 pH	77%	48%	77%	32.69%
Medium Acid 6.0 pH	89%	52%	100%	19.67%
Neutral 7.0 pH	100%	100%	100%	00.0%

pH and Fertilizer Efficiency Chart

